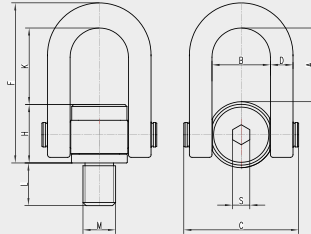


PCGML MODEL (LONG)

FOLDABLE SWIVEL EYEBOLTS

Features:

- No reduction in load capacity at the angles you can work at.
- Screw quality 10.9
- Manufactured according to EN-1677-1 standard
- Safety coefficient of 4:1

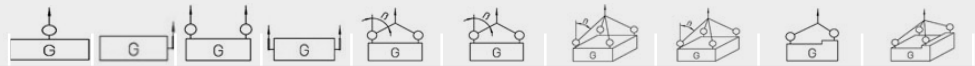


OPTIONAL:

- Possibility of cutting them to size at no additional cost

| CODE | METRICS mm | WORKING LOAD C.M.T. / TON | L | A | B | C | D | F | K | M | H | S | TIGHTENING TORQUE Nm | WEIGHT Kg |
|---------------|------------|---------------------------|-----|-------|----|-----|----|-------|-------|----|----|------|----------------------|-----------|
| PCGML87605 | M8 | 0.5 | 60 | 48.5 | 37 | 76 | 14 | 103.5 | 49.5 | 8 | 40 | 10.5 | 30 | 0.8 |
| PCGML109607 | M10 | 0.7 | 96 | 48.5 | 37 | 76 | 14 | 103.5 | 49.5 | 10 | 40 | 10.5 | 60 | 0.8 |
| PCGML1211410 | M12 | 1 | 114 | 48.5 | 37 | 76 | 14 | 103.5 | 49.5 | 12 | 40 | 10.5 | 100 | 0.8 |
| PCGML1414015 | M14 | 1.5 | 140 | 48.5 | 37 | 76 | 14 | 103.5 | 49.5 | 14 | 40 | 10.5 | 120 | 0.8 |
| PCGML1614920 | M16 | 2 | 149 | 73 | 37 | 76 | 14 | 103.5 | 49.5 | 16 | 40 | 10.5 | 150 | 0.8 |
| PCGML2018630 | M20 | 3 | 186 | 73 | 54 | 106 | 20 | 151 | 77 | 20 | 54 | 14.5 | 250 | 2 |
| PCGML2422145 | M24 | 4.5 | 221 | 98.5 | 54 | 106 | 20 | 151 | 77 | 24 | 54 | 14.5 | 400 | 2.5 |
| PCGML3027873 | M30 | 7.3 | 278 | 98.5 | 74 | 149 | 30 | 206.5 | 103.5 | 30 | 73 | 22.5 | 500 | 5.5 |
| PCGML3322080 | M33 | 8 | 220 | 98.5 | 74 | 149 | 30 | 206.5 | 103.5 | 33 | 73 | 22.5 | 800 | 5.5 |
| PCGML36222100 | M36 | 10 | 222 | 98.5 | 74 | 149 | 30 | 206.5 | 103.5 | 36 | 73 | 22.5 | 1000 | 5.5 |
| PCGML39250100 | M39 | 10 | 250 | 98.5 | 74 | 149 | 30 | 206.5 | 103.5 | 39 | 73 | 22.5 | 1200 | 6 |
| PCGML42264125 | M42 | 12.5 | 264 | 98.5 | 74 | 149 | 39 | 206.5 | 103.5 | 42 | 73 | 22.5 | 1500 | 6 |
| PCGML45250150 | M45 | 15 | 250 | 117.5 | 74 | 149 | 39 | 206.5 | 103.5 | 45 | 73 | 22.5 | 1800 | 6 |
| PCGML48295200 | M48 | 20 | 295 | 117.5 | 93 | 183 | 36 | 255 | 122 | 48 | 93 | 27.5 | 2000 | 11.5 |
| PCGML52250200 | M52 | 20 | 250 | 117.5 | 93 | 183 | 36 | 255 | 122 | 52 | 93 | 27.5 | 2000 | 12 |
| PCGML56250250 | M56 | 25 | 250 | 117.5 | 93 | 183 | 36 | 255 | 122 | 56 | 93 | 27.5 | 2100 | 12 |
| PCGML64250320 | M64 | 32 | 250 | 186 | 93 | 183 | 36 | 255 | 122 | 64 | 93 | 27.5 | 2200 | 13 |

LIFTING METHOD



NUMBER OF LINKS

1 1 2 2 2 2 3-4 3+4 2 3+4

INCLINATION ANGLE

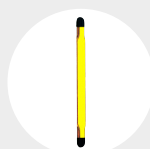
0° 90° 0° 90° 0° - 45° 45° - 60° 0° - 45° 45° - 60° ASYMMETRIC ASYMMETRIC

| CODE | METRICS mm | LOAD CAPACITY Kg | | | | | | | | | |
|---------------|------------|------------------|--------|--------|--------|--------|--------|--------|--------|--------|--------|
| PCGML87605 | M8 | 500 | 500 | 1.000 | 1.000 | 700 | 500 | 1.100 | 800 | 500 | 500 |
| PCGML109607 | M10 | 700 | 700 | 1.400 | 1.400 | 1.000 | 700 | 1.500 | 1.100 | 700 | 700 |
| PCGML1211410 | M12 | 1.000 | 1.000 | 2.000 | 2.000 | 1.400 | 1.000 | 2.100 | 1.500 | 1.000 | 1.000 |
| PCGML1414015 | M14 | 1.500 | 1.500 | 3.000 | 3.000 | 2.100 | 1.500 | 3.150 | 2.300 | 1.500 | 1.500 |
| PCGML1614920 | M16 | 2.000 | 2.000 | 4.000 | 4.000 | 2.800 | 2.000 | 4.200 | 3.150 | 2.000 | 2.000 |
| PCGML2018630 | M20 | 3.000 | 3.000 | 6.000 | 6.000 | 4.200 | 3.000 | 6.300 | 4.500 | 3.000 | 3.000 |
| PCGML2422145 | M24 | 4.500 | 4.500 | 9.000 | 9.000 | 6.300 | 4.500 | 9.450 | 6.800 | 4.500 | 4.500 |
| PCGML3027873 | M30 | 7.300 | 7.300 | 14.600 | 14.600 | 10.200 | 7.300 | 15.300 | 11.000 | 7.300 | 7.300 |
| PCGML3322080 | M33 | 8.000 | 8.000 | 16.000 | 16.000 | 11.200 | 8.000 | 16.800 | 12.000 | 8.000 | 8.000 |
| PCGML36222100 | M36 | 10.000 | 10.000 | 20.000 | 20.000 | 14.000 | 10.000 | 21.000 | 15.000 | 10.000 | 10.000 |
| PCGML39250100 | M39 | 10.000 | 10.000 | 20.000 | 20.000 | 14.000 | 10.000 | 21.000 | 15.000 | 10.000 | 10.000 |
| PCGML42264125 | M42 | 12.500 | 12.500 | 25.000 | 25.000 | 17.500 | 12.500 | 26.300 | 18.800 | 12.500 | 12.500 |
| PCGML45250150 | M45 | 15.000 | 15.000 | 30.000 | 30.000 | 21.000 | 15.000 | 31.500 | 22.500 | 15.000 | 15.000 |
| PCGML48295200 | M48 | 20.000 | 20.000 | 40.000 | 40.000 | 28.000 | 20.000 | 42.000 | 30.000 | 20.000 | 20.000 |
| PCGML52250200 | M52 | 20.000 | 20.000 | 40.000 | 40.000 | 28.000 | 20.000 | 42.000 | 30.000 | 20.000 | 20.000 |
| PCGML56250250 | M56 | 25.000 | 25.000 | 50.000 | 50.000 | 35.000 | 25.000 | 53.000 | 37.500 | 25.000 | 25.000 |
| PCGML64250320 | M64 | 32.000 | 32.000 | 64.000 | 64.000 | 45.000 | 32.000 | 67.000 | 48.000 | 32.000 | 32.000 |

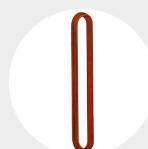
ACCESSOIRES RECOMMANDÉS



"DOL" SLING
Pag. 84



FLAT SLINGS
Pag. 94



ROUND SLINGS
Pag. 95